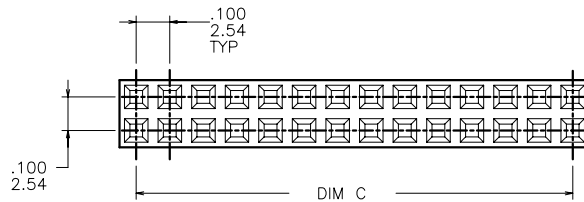
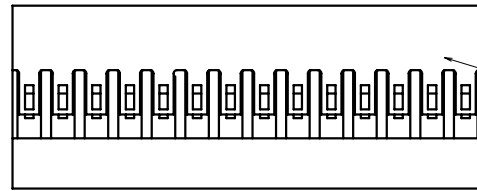
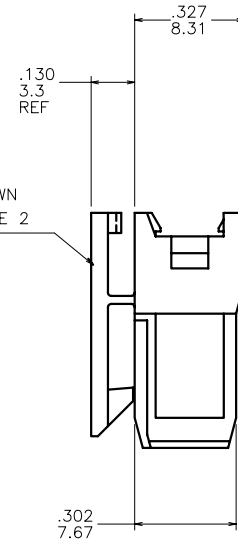
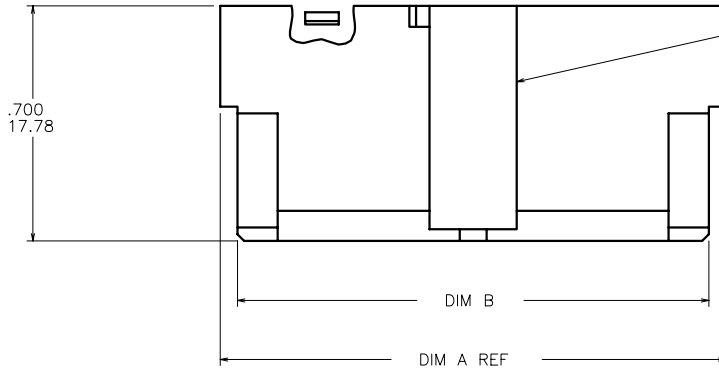


PRODUCT NUMBER
SEE TABLE



NOTES:

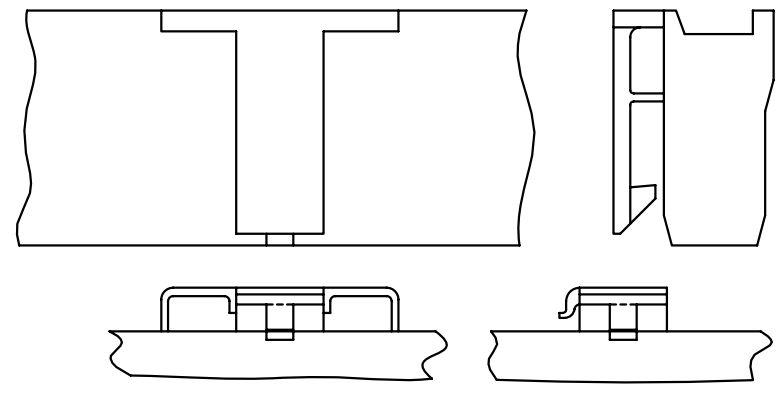
- ① MATERIAL: MODIFIED POLYPHENELENE ETHER, COLOR BLACK, UL-94V-0.
2. APPLICABLE SPECIFICATIONS:
BUS-12-067: PRODUCT SPECIFICATION
TA-75: CRIMPING INSTRUCTIONS (TERMINALS MUST BE CRIMPED PROPERLY FOR SATISFACTORY LATCHING).
TA-531: INSTALLING AND REMOVING TERMINALS
3. PRODUCT MEETS EUROPEAN UNION DIRECTIVES AND OTHER COUNTRY REGULATIONS AS DESCRIBED IN GS-22-008.
4. THIS PRODUCT IS NOT INTENDED TO BE EXPOSED TO MANUFACTURING SOLDER PROCESSES.

mat'l. code SEE NOTE 1				surface <input checked="" type="checkbox"/>		tolerance		projection		product family PV HOUSINGS	
tolerances unless otherwise specified				angles		linear		INCH/MM		title	
ltr	ec'n no	dr	date							MINI LATCH HOUSING SHROUD ASSEMBLY	
F	v06-0357	HTB	2006-04-17							sheet 1 of 2 size	
G	v06-1045	HTB	2006-10-18							69153 A3	
H	v07-0097	HTB	2007-01-31	0°±2'		xxxx+0020/xxx+051		scale 5:1		dwg no	
J	v07-0533	HTB	2007-08-21	dr	T. BREWBAKER	2006-04-17					Product Customer Drawing
				engr	T. BREWBAKER	2006-04-17					
				chr	T. BREWBAKER	2006-04-17					
				appd	T. BREWBAKER	2006-04-17					
sheet	revision	J	J								
index	sheet	1	2								



Copyright FCJ

PRODUCT NUMBER	DIM A	DIM B	DIM C	HOUSING POS REF	LATCH STYLE
69153-001		U N A V A I L A B L E			
69153-002		U N A V A I L A B L E			
69153-003		U N A V A I L A B L E			
69153-004		U N A V A I L A B L E			
69153-005		U N A V A I L A B L E			
69153-006		U N A V A I L A B L E			
69153-007		U N A V A I L A B L E			
69153-008		U N A V A I L A B L E			
69153-009		U N A V A I L A B L E			
69153-010		U N A V A I L A B L E			
69153-011		U N A V A I L A B L E			
69153-012LF	2.606/66.19	2.519/63.98	2.400/60.96	2 X 25	2
69153-013		U N A V A I L A B L E			
69153-014		U N A V A I L A B L E			
69153-015LF	2.306/58.57	2.219/56.36	2.100/53.34	2 X 22	2
69153-016		U N A V A I L A B L E			
69153-017		U N A V A I L A B L E			
69153-018		U N A V A I L A B L E			
69153-019		U N A V A I L A B L E			
69153-020LF	1.806/45.87	1.719/43.66	1.600/40.64	2 X 17	2
69153-021		U N A V A I L A B L E			
69153-022		U N A V A I L A B L E			
69153-023LF	1.506/38.25	1.419/36.04	1.300/33.02	2 X 14	2
69153-024LF	1.406/35.71	1.319/33.50	1.200/30.48	2 X 13	2
69153-025		U N A V A I L A B L E			
69153-026		U N A V A I L A B L E			
69153-027LF	1.106/28.09	1.019/25.88	.900/22.86	2 X 10	2
69153-028		U N A V A I L A B L E			
69153-029LF	.906/23.01	.819/20.80	.700/17.78	2 X 8	1
69153-030LF	.806/20.47	.719/18.26	.600/15.24	2 X 7	1
69153-031LF	.706/17.93	.619/15.72	.500/12.70	2 X 6	1
69153-032LF	.606/15.39	.519/13.18	.400/10.16	2 X 5	1
69153-033LF	.506/12.85	.419/10.64	.300/7.62	2 X 4	1
69153-034LF	.606/15.39	.519/13.18	.400/10.16	2 X 5	1
69153-035LF	.906/23.01	.819/20.80	.700/17.78	2 X 8	1



VIEW Z LATCH STYLE 2 STYLE 1

PRODUCT NUMBER	DIM A	DIM B	DIM C	HOUSING POS REF	LATCH STYLE
NOTE 3					
CUSTOMER RESTRICTED					
69153-012ELF	2.606/66.19	2.519/63.98	2.400/60.96	2 X 25	2

mat'l. code SEE NOTE 1				surface <input checked="" type="checkbox"/> tolerance		projection		product family PV HOUSINGS	
ltr	ecn no	dr	date	tolerances unless otherwise specified				title	
J				angles	linear	INCH/MM		MINI LATCH HOUSING SHROUD ASSEMBLY	
				0°±2'		scale 5:1			
				dr	T. BREWBAKER	2006-04-17			dwg no
				engr	T. BREWBAKER	2006-04-17			sheet 2 of 2
				chr	T. BREWBAKER	2006-04-17			size
				appd	T. BREWBAKER	2006-04-17			A3
sheet	revision						type		Product Customer Drawing
index	sheet								



Copyright FCJ